



POHL FACADES PRODUCT OVERVIEW

METAL FACADES AND SURFACES

“The POHL Group is more than a network of specialist companies – with our keen sense of architecture and design, we have been developing high-quality and innovative metal products for roofs and facades for six generations now. Come and see for yourself.”

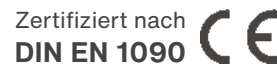
Heinrich R. Pohl, Owner POHL Group

Heinrich R. Pohl (Owner POHL Group)
with daughter Katja Boden (Managing Director / Director HR)



POHL – 165 YEARS OF EXPERIENCE WITH METAL

- Family business in the sixth generation
- Over 500 employees at 7 production sites
- High performance machinery and skilled crafts manship
- Manufacturer of rainscreen cladding and ventilated facade systems
- Advice on design elaboration as well as support during pre-construction
- High-quality surface designs
- A group of highly successful facade companies with additional specialists for substructures and roof safety systems



ADVANTAGES OF THE RAINSCREEN SYSTEM

INSTALLATION

- Easy assembly and tolerance compensation
- Dry insulation layer and variable insulation thickness
- Simple replacement of defective elements



PROTECTION

- Effective protection of the underlying components from environmental influences
- High resistance to mechanical stress and vandalism
- Optimal sound insulation (up to 14 dB higher noise reduction)



ENERGY EFFICIENCY

- Protection from overheating in summer
- Healthy indoor climate



FIRE PROTECTION

- Highest fire protection standard EN1305¹



DESIGN

- Endless diversity regarding material and surface design
- Homogeneous appearance thanks to invisible fastening
- 3D shaping possible



ECONOMIC EFFICIENCY

- Precise planning of cost and work
- Reduced construction site costs due to precise manufacturing and preassembly
- Higher production costs are more than compensated for by lower maintenance and repair costs
- Above-average durability
- Value retention through high-quality materials



SUSTAINABILITY

- All energy related building standards are easy to meet
- Materials easily recyclable¹



¹ depending on the selected surface

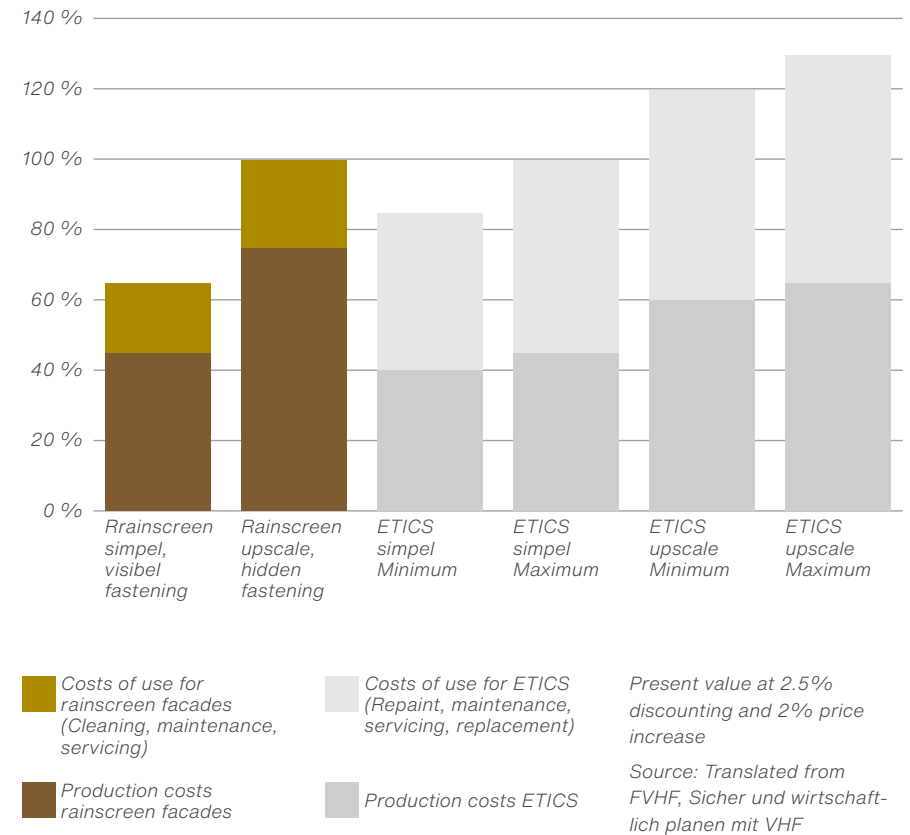
ECONOMIC EFFICIENCY

Even during the planning phase, an exact and reliable cost calculation for rainscreen facade systems is possible. In order to determine the economic efficiency, the costs over the entire life cycle must be taken into account. Compared to the external thermal insulation composite system (ETICS), a rainscreen system initially incurs higher production costs. However, thanks to its very long service life and particularly low maintenance and servicing costs, it is more economical.

Good to know: at the end of its service life, the rainscreen facade can be easily dismantled and recycled¹.

BENEFIT

Rainscreen facades offer an optimum ratio of performance to cost over the entire product life cycle.



¹ depending on the selected surface

WE FOCUS ON METAL

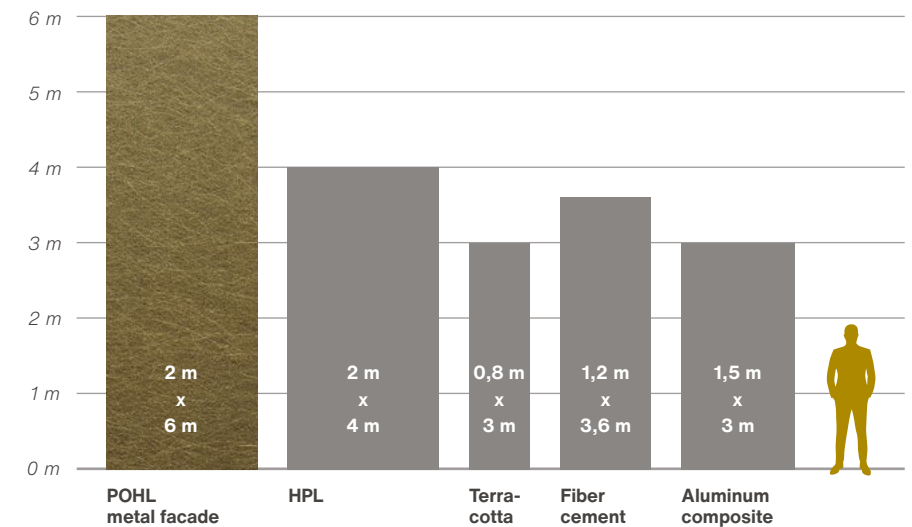
Every facade is required to meet ever stricter design, life-cycle, and sustainability requirements. That's why choosing a material suitable for specific project challenges is important.

	POHL metalfacade	HPL ¹	Terracotta	Fibre cement	Aluminum composite
Economic recycling	✓	✗	✗	✓	✗
Stability of material value	✓	✗	✗	✓	✗
Highest material dimensional accuracy in planning and execution	✓	✓	✗	✓	✓
Cold formability	✓	✗	✗	✗	✓
Fire protection A1-S0-D0 ²	✓	✓	✓	✓	✗
Fracture resistance	✓	✓	✗	✗	✓
Lastenabtragung	✓	✗	✗	✗	✓

¹ High Pressure Laminate, composite material

² Depending on the selected surface.
Fire protection classification according to EN 13501-1

Every facade material has its pros and cons. In the end, the design approach and project resources need to be satisfied. One growing trend in architecture is for large-sized panels – a demand that metal can meet well.

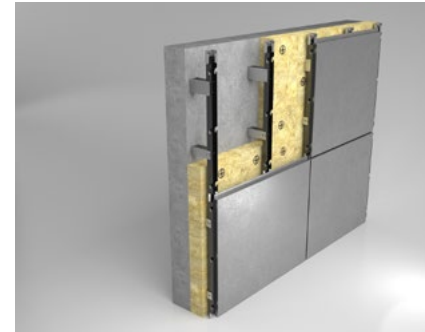


POHL FACADE SYSTEMS

All POHL facade systems are rainscreen facades structured as followed: substructure, support frame, insulation, back ventilation and cladding. Especially for cladding there are no limits to creativity in design.

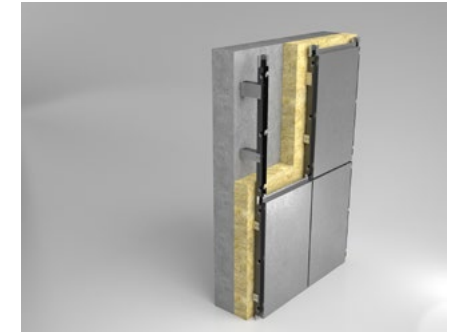
BENEFIT

All POHL system facades meet the fire protection classification A1 and, depending on the selected surface, have a guaranteed service-life of up to 30 years.



POHL EUROPANEL

Large-sized metal panels with rounded edges and hidden fastening.



POHL EUROPLATE

Large-sized metal sheets with sharp edges and 3D design possibilities.



POHL ECOPANEL

Slim panels with horizontal lines and a cost-effective assembly method.

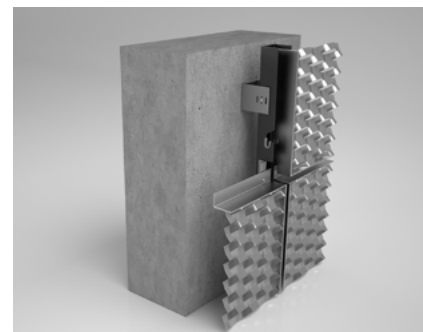
POHL FACADE SYSTEMS EXPENDED METAL

A total of four system variants offer a wide range of design options. Expanded metal can be used to provide privacy and sun protection in front of a glass facade, and to clad a multi-story car park. Furthermore, expanded metal is also a design option for interiors or as ceiling cladding for canopies. Our in-house engineering provides a broad database with 2D and 3D drawings so we are confident to find the right mesh for your project.

Good to know: Our expanded metal facade systems create a continuous joint pattern.

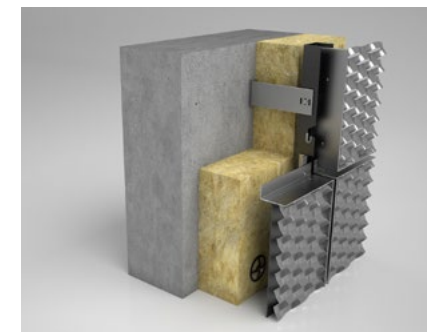
THE RIGHT EXPENDED METAL SYSTEM IN 3 STEPS

- Warm or cold facade
- Mesh type and size
- Hair joint or visible joint pattern



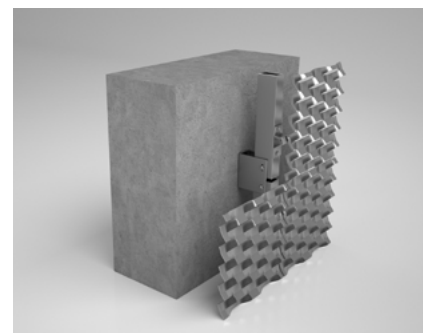
POHL EUROPANEL EM

Characterized by a visible joint pattern, and horizontal or vertical emphasis.



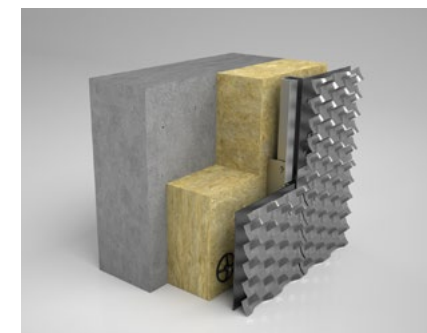
POHL EUROPANEL EM-P

The same characteristics but with insulation usable as warm facade.



POHL ECOPANEL EM

Homogeneous appearance and a circumferential trimming.



POHL ECOPANEL EM-P

The same homogeneous appearance but with insulation as warm facade.



COMPARE PRODUCTS

PRODUCT	POHL EUROPANEL	POHL EUROPLATE	POHL ECOPANEL	POHL EUROPANEL EM	POHL EUROPANEL EM-P	POHL ECOPANEL EM	POHL ECOPANEL EM-P
DESIGN	<ul style="list-style-type: none">• Tilted appearance• Rounded edges	<ul style="list-style-type: none">• Sharp edges• 3D	<ul style="list-style-type: none">• Tilted appearance• Rounded edges	<ul style="list-style-type: none">• Cold facade• Smooth joint pattern	<ul style="list-style-type: none">• Warm facade• Smooth joint pattern	<ul style="list-style-type: none">• Cold facade• Smooth joint pattern	<ul style="list-style-type: none">• Warm facade• Smooth joint pattern
FEATURES	<ul style="list-style-type: none">• Concealed pin suspension	<ul style="list-style-type: none">• flexible UK; intelligente Entwässerungsfunktion	<ul style="list-style-type: none">• Long and slim appearance	<ul style="list-style-type: none">• Based upon Europanel®	<ul style="list-style-type: none">• Based upon Europanel®	<ul style="list-style-type: none">• Based upon Europanel®	<ul style="list-style-type: none">• Based upon Europanel®
ASSEMBLY	Suspension system	Suspension system	Screw system	Suspension system	Screw system	Screw system	Screw system
INDIVIDUAL DISASSEMBLY	yes	yes	no	yes	yes	yes	no
MAX. SIZE (M)	2 x 6	2 x 6	0,5 x 6	2 x 6	2 x 6	0,5 x 6	0,5 x 6
FORM	2D	2D + 3D	2D	2D	2D	2D	2D
DESIGN POSSIBILITIES	high	high	normal	high	high	normal	normal
MATERIAL VARIETY	yes	yes	yes	Aluminum	Aluminum	Aluminum	Aluminum
DRAINAGE	yes	yes	yes	nein	yes	no	yes
HIDDEN FASTENING	yes	yes	yes	yes	yes	no	no
READJUSTABLE	yes	yes	no	no	no	no	no

Facade competence in the POHL Group: In order to meet the constantly growing requirements of minimizing thermal bridges, we use the passive house certified stainless steel wall bracket by Systea®.



POHL SURFACES

Surface creates character. We offer individual surface designs for all precious metals such as aluminum, stainless steel, zinc, corten steel or brass.

MATERIAL

MECHANICAL
PROCESSING

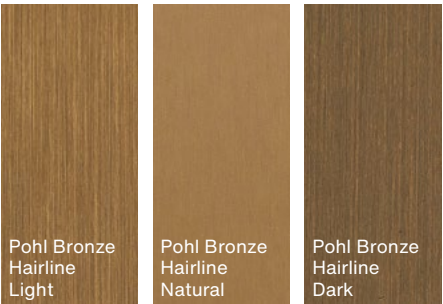
COATING

COLORING

SEALING



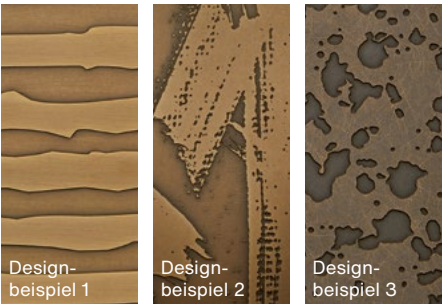
COPPER AND BRASS ALLOYS



POHL BRONZE

Color spectrum from reddish over gold to brownish nuances.

THICKNESS	1 mm till 4 mm
SEALING	Wax Lacquer
PANELSIZE	1620 mm x 6000 mm (others on request)



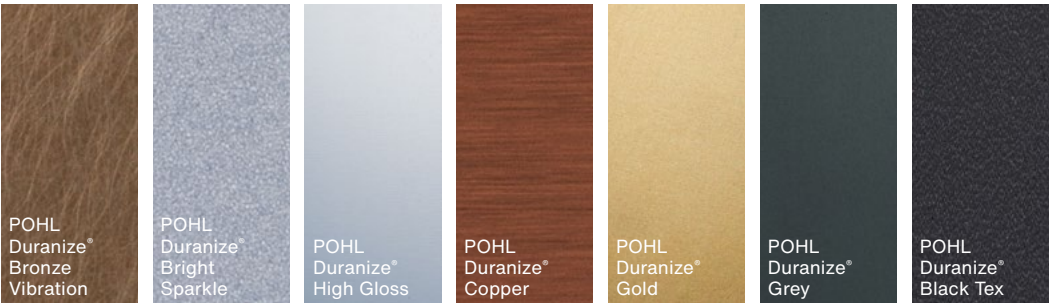
POHL BRONZE ETCHED

THICKNESS	1 mm till 4 mm
SEALING	Wax Lacquer
ETCHING	Individual Designs
PANELSIZE	2000 mm x 6000 mm (others on request)





ALUMINUM

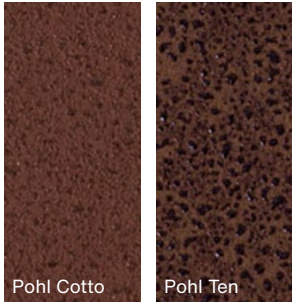


POHL DURANIZE®

Large color spectrum due to special POHL anodized finishes and all standard anodizing colors.

THICKNESS	Up to 4 mm (more on request)
PANEL SIZE	1500 mm x 4000 mm with polish 2000 mm x 6000 mm without polish (others on request)

Our portfolio for the finishing of aluminum is rounded out by a wide range of powder coatings (RAL colors) and di-color coatings (2-layer procedure).



POHL COTTO

The pre-anodized aluminum is given a special coating with dual crust formation in an elaborate manual process imitating the hues of terracotta.

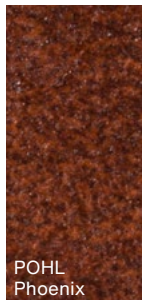
POHL TEN

Pre-anodized aluminum plus coating with double crust imitates the weathered appearance of corten steel.

THICKNESS	Up to 6 mm (more on request)
PANEL SIZE	2000 mm x 6000 mm (others on request)



WEATHERING STEEL

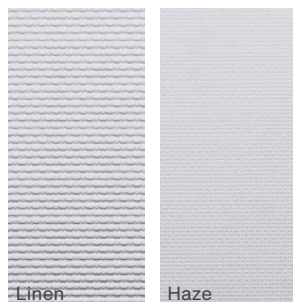


POHL PHOENIX

Under the influence of weather a rust patina is formed on the surface of the corten steel sheets. The surface stands out with a high resistance to weathering and is manufactured without coatings or further chemicals.

THICKNESS	Up to 6 mm
SEALING	Nature or pre-weathered
PANEL SIZE	1500 mm x 6000 mm (others on request)

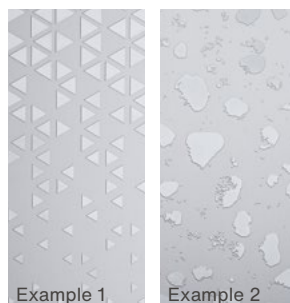
STAINLESS STEEL



EMBOSSING

Stainless steel sheets with a delicate or elaborate embossing

THICKNESS	Up to 2 mm (more on request)
PANEELGRÖSSE	1500 mm x 6000 mm (others on request)



ETCHED

By means of a special etching process, a wide range of design possibilities opens up.

THICKNESS	1 mm bis 4 mm
SEALING	Wax Lacquer
ETCHING	Individuel Designs
PANEL SIZE	2000 mm x 6000 mm (others on request)

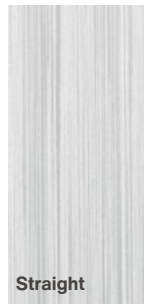


POHL CHARCOAL MATT

Through an elaborate finishing process, the coloring remains within the passive layer of the steel. This makes the surface extremely durable and protected from weather influences.

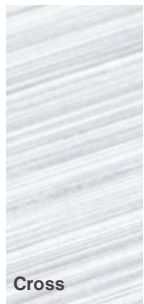
THICKNESS	bis 3 mm (more on request)
PANEL SIZE	2000 mm x 6000 mm (others on request)

GRIND CUTS



Straight

Directional
polish with
structure



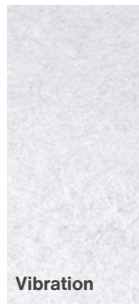
Cross

Diagonal
polish with
structure



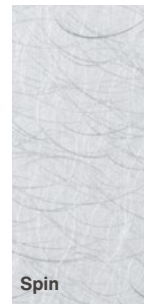
Dash

Cross polish
with structure



Vibration

Non-direc-
tional polish
with delicate
appearance



Spin

Non-direc-
tional polish
with strong
accents

In addition to a wide variety of grains, we offer you individual polishes that heighten the desired surface effect. In principle, any polish is possible with any material. Our experts will advise you what polish fits what surface and how we can meet your expectations.

ARCHITECTURAL HIGHLIGHTS WORLDWIDE



THE GHERKIN LONDON

- Ken Shuttleworth and Norman Foster
- Column cladding



TRANSPORTATION HUB NEW YORK

- Santiago Calatrava
- 5.000 m² aluminum panels



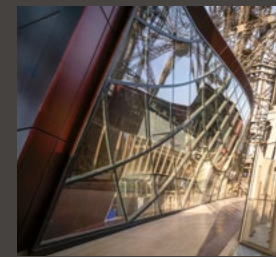
ONE WORLD TRADE CENTER NEW YORK

- Skidmore, Owings & Merrill LLP
- Speziell geprägte Edelstahlbleche für den Sockel, den umlaufenden Ring und die Gebäudeecken



THE CENTER HONGKONG

- Dennis Lau & NG Chun Man Architects & Engineers
- POHL Europanel® mirrropolished stainless steel embossing



EIFFELTOWER PARIS

- Agence Moatti-Rivière's
- POHL Europanel® anodized



WOODEN HIGHRISE HEILBRONN

- Kaden + Lager
- POHL Europanel®



POHL Group of Companies

POHL FACADE DIVISION

POHL Metal Systems GmbH
Robert-Bosch-Str. 6
50769 Cologne
Germany

Tel. +49 221 70911-0

info@pohl-facades.com
www.pohl-facades.com