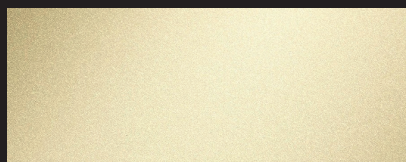


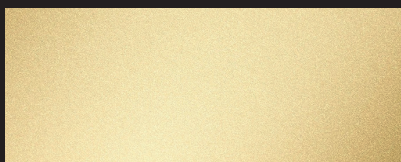
# POHL DURANIZE® COLOR CHART

# POHL

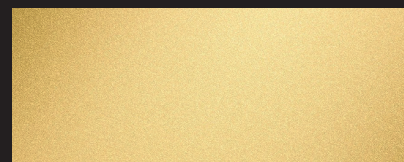
Bei POHL Duranize® wird die oberste Schicht des Aluminiums eloxiert und bildet eine extrem harte, kratzfest und langlebige Oberfläche, die wenig Pflege benötigt. POHL Duranize® ist in allen Standard-Eloxalfarben erhältlich. Darüber hinaus haben wir für Sie spezielle Eloxaloberflächen entwickelt.



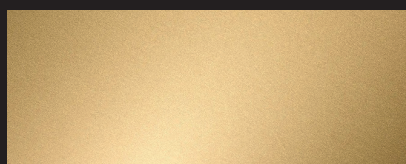
POHL Duranize Gold Light



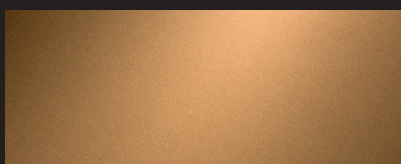
POHL Duranize Gold Medium



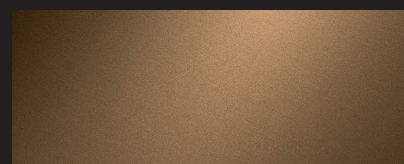
POHL Duranize Gold Dark



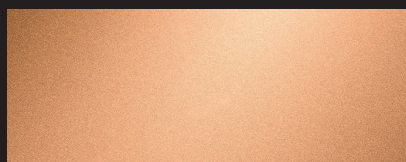
POHL Duranize Brass Light



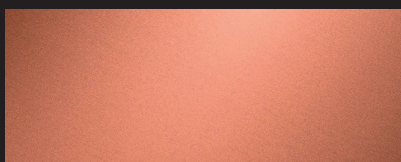
POHL Duranize Brass Medium



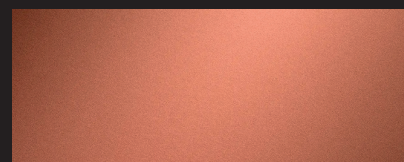
POHL Duranize Brass Dark



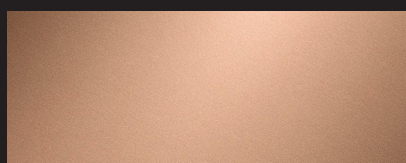
POHL Duranize Copper Light



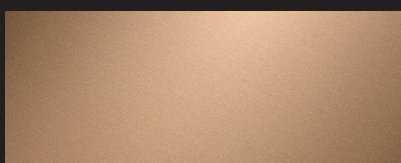
POHL Duranize Copper Medium



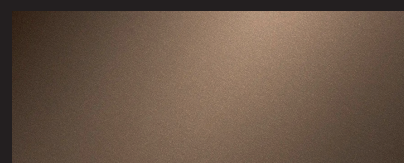
POHL Duranize Copper Dark



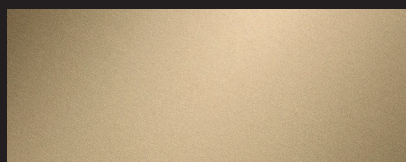
POHL Duranize Old Copper Light



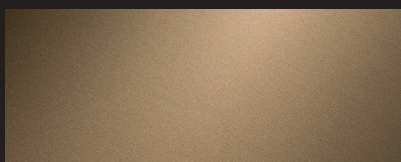
POHL Duranize Old Copper Medium



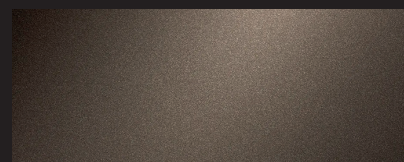
POHL Duranize Old Copper Dark



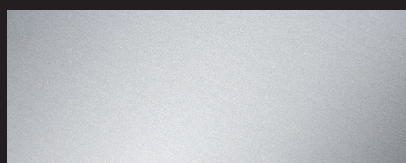
POHL Duranize Bronze Light



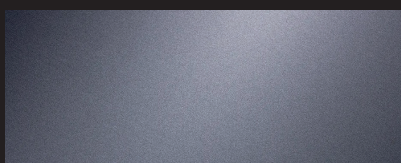
POHL Duranize Bronze Medium



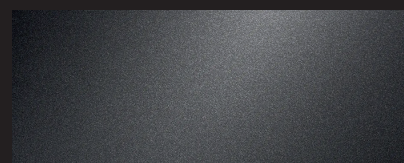
POHL Duranize Bronze Dark



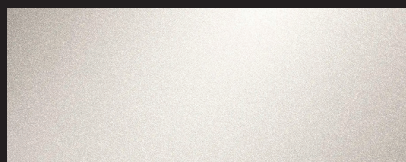
POHL Duranize Silver



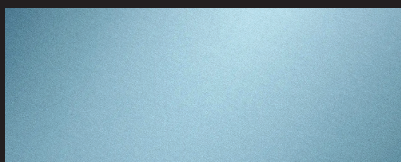
POHL Duranize Grey Dark



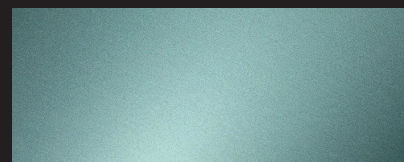
POHL Duranize Black



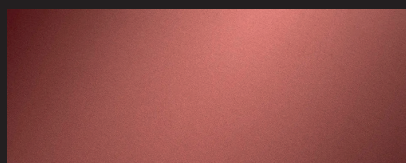
POHL Duranize Champagne



POHL Duranize Blue



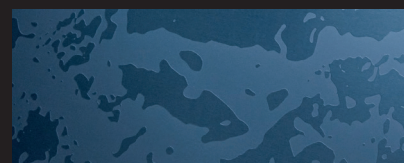
POHL Duranize Green



POHL Duranize Red Light



POHL Duranize Bicolor Example



POHL Duranize Bicolor Example

#### Disclaimer:

Die Farbabbildungen dienen als Beispiele. Farbabweichungen sind möglich und stellen keinen Grund zur Beanstandung dar. Nur vereinbarte Referenzmuster sind verbindlich.