

POHL



Expanded Metal Solutions for Facade Cladding

 THE STATEMENT OF YOUR BUILDING



Exclusive metal panel solutions for impressive architecture.

POHL specializes in engineering and fabrication of bespoke metal panel solutions with various materials and surfaces. Our forte is the creation of unique and complex metal cladding for exterior and interior applications of a building. Regardless of shape, color, or material, we embrace every challenge to transform your building into a landmark that captivates and leaves a lasting impression on its viewers.

POHL expanded metal systems

Expanded metal facade cladding offers diverse functional and design options. Positioned in front of a glass facade, it provides effective privacy and sun protection while still allowing light and visibility. At the same time, it offers an efficient solution for cladding multi-storey car parks, ensuring continuous air circulation. Beyond exterior applications, expanded metal also serves as a refined architectural element for interior spaces and ceiling designs.

Benefits

- Intelligent shading solutions
- Regulation of the room temperature
- Bright rooms while being protected from outside views
- Diffuse sound reflection helps to channel the noise emission
- Diverse design options in mesh and color

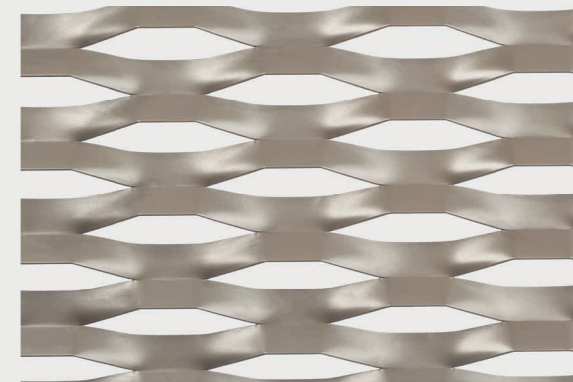
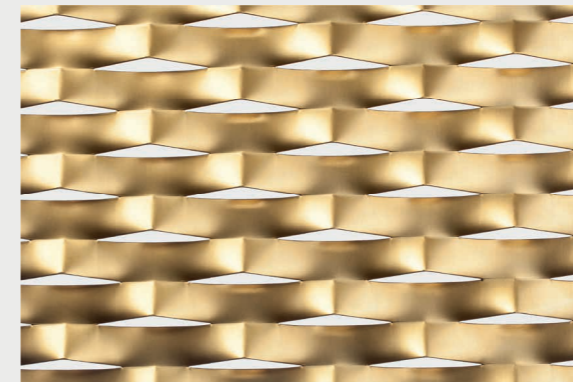
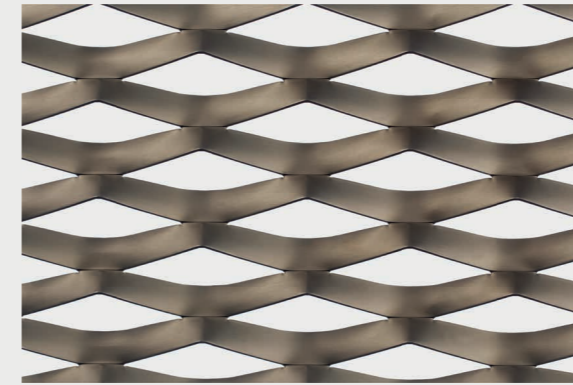
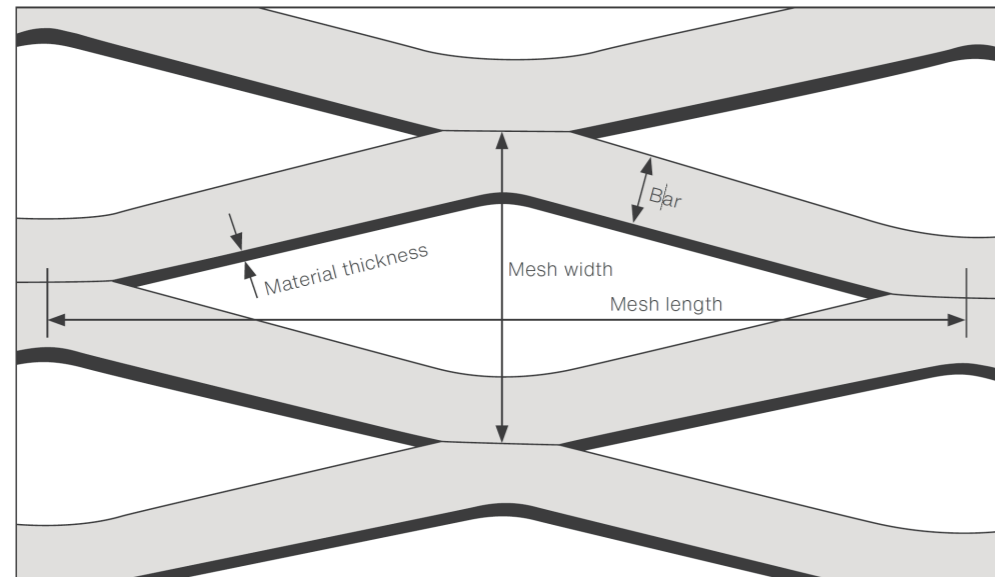


The right mesh for every requirement

The form of expanded grating made of aluminum can be shaped flexibly and is particularly very well suited as architectural element.

- Panel sizes up to 500 x 6000 mm
- Material thickness of 2 to 4 mm
- Any mesh types possible
- On request some of the meshes can be processed from pre-galvanized steel, aluminum, copper and brass.

Technical Properties



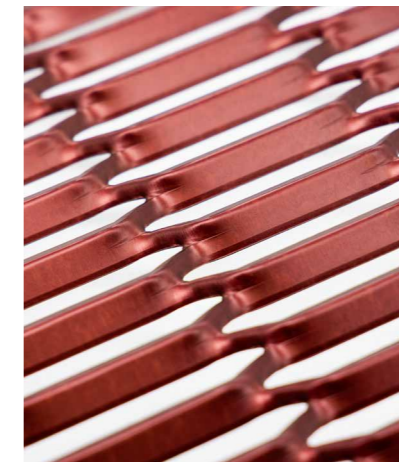
We provide a comprehensive database of all expanded metal specifications and are happy to advise you on light transmittance, ventilation cross-section, and selecting the right mesh for your needs.



Form and Color

After selecting the desired geometric mesh type, element size and technical key points, numerous design possibilities open up.

Being matt or glossy, colored or natural - you determine the finish. Architectural mesh is outstandingly suitable for an anodized surface, such as POHL Duranize. However, powder coating or wet paint are also suitable to implement the desired design.



The open mesh structure allows natural light to pass through while creating distinctive patterns of light and shadow. This adds depth and character to the facade while helping functional building elements blend harmoniously into the overall design.

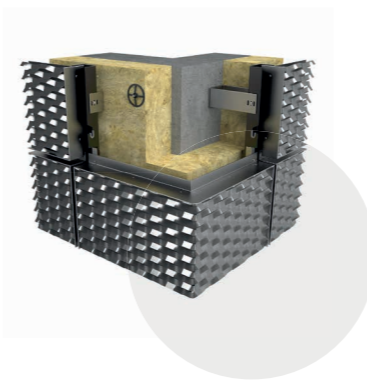
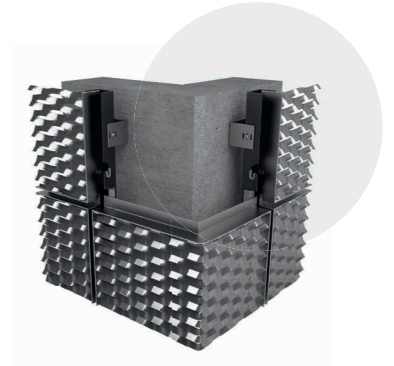


Expanded Metal Systems

POHL Europanel EM

Expanded metal cold facade

This system serves as horizontal or vertical accents, providing privacy and sun protection for glass facades, louvers or cladding for structures like parking garages, allowing optimal airflow and natural light.



POHL Europanel EM-P

Expanded metal warm facade

This closed system with a metal backpanel is an additional version of the POHL Europanel facade, combining all the benefits of a ventilated curtain wall system.

Available in different mesh types and surface finishes.

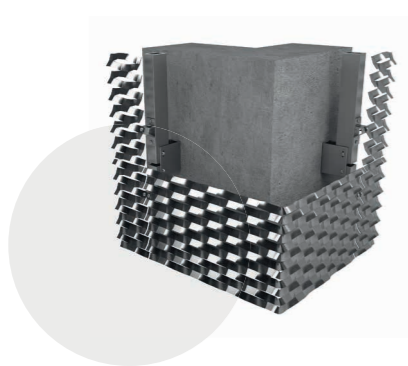
Kubus Aalen · Aalen · Germany | © David Matthiessen

Expanded Metal Systems

POHL Ecopanel EM

Expanded metal cold facade

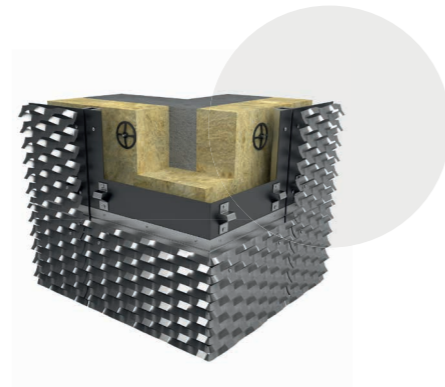
This cold facade serves as effective privacy and sun protection for glass facades, vent covers or as air- and light-permeable cladding for parking garages. Ideal for creating highlights in interior design.



POHL Ecopanel EM-P

Expanded metal warm facade

This closed system variant with a metal backpanel is a further variant of the POHL Ecopanel system facade and offers all the advantages of a ventilated curtain wall facade.



Available in different mesh types and surface finishes.

Fa. Lemken · Alpen · Germany | © Studio Holger Knaut, Düsseldorf



POHL

Titel: Kubus Aalen · Aalen · Germany | © David Matthiessen

POHL FACADE DIVISION

POHL Metal Systems GmbH
Robert-Bosch-Str. 6
50769 Cologne
Germany

Tel.: +49 221 70911-0

info@pohl-facades.com
www.pohl-facades.com

